

Z-Wave Plug-in Smart Dimmer

JASCO®

Specifications

Power: 120VAC, 60Hz **Signal Frequency:** 908.4/916MHz

Maximum load for the Z-Wave controlled outlet:

2.5A, 300W incandescent / 100W dimmable CFL/LED

Z-Wave controlled outlet is fused @ 5A – this fuse is not user serviceable

Range: Up to 150 feet from controller or closest Z-Wave device

Operating temperature: 32-104° F (0-40° C)

Warranty: 5-year limited product warranty

For indoor use only

Design Features

- Turn ON/OFF and dim remotely from a Z-Wave controller
- Remotely monitor with any mobile device*
- Can be included in multiple groups and scenes
- One Z-Wave controlled polarized outlet for dimmable LED, CFL and incandescent lights
- One grounded always-on outlet
- Manual ON/OFF and brightness control with the top-mounted push button
- Space-saving design
- Does not block the bottom outlet when plugged into the top outlet of a duplex receptacle with the ground pin down
- Cords for connected devices route to the sides allowing close placement of furniture
- Uses Z-Wave firmware update metadata command class for standardized over-the-air updates
- Z-Wave Plus certified
- Two-tone finish
- Trilingual instruction manual – English, French and Spanish

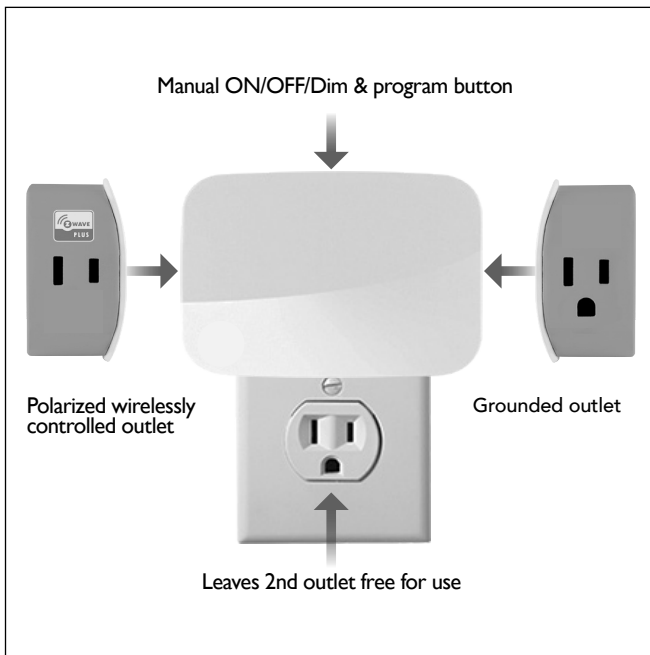
Z-Wave Plus Features

- Works with Z-Wave Classic and Z-Wave Plus devices
- Up to 50% greater wireless range**
- 250% faster processor**
- 400% more memory**
- 50% more energy efficient**
- Supports wireless upgrades to future-proof your home

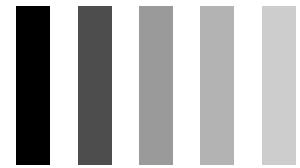


*Requires Z-Wave hub or controller – functions vary by brand

**Compared to previous Z-Wave generations



**Save Energy,
Save Money**



**Full-Range
Dimmability**

Two-Outlet Smart Dimmer

One wirelessly controlled dimmable outlet and one grounded always-on outlet

Brightness Adjustments

Dimming lights cuts energy cost and extends bulb life — dims 0-100% in 1% increments

Device Configuration

Adding your device to a Z-Wave network

Once the hub is ready to add your device, press and release the top button on the smart dimmer.

To remove and reset the device

Once the controller is ready to remove your device, press and release the top button on the smart dimmer to remove it.

To return to factory defaults

While plugging in the smart dimmer, press the top button for at least three seconds.

Certifications & Compliances



Compliances, specifications and availability are subject to change without notice.

Distributed by Jasco Products Company LLC
10 E. Memorial Rd., Oklahoma City, OK

Questions? Contact our U.S.-based Consumer Care at
1-800-654-8483 between 7AM-8PM, M-F, Central Time.

©Jasco 2022

Related Products - Z-Wave Plug-in Smart Controls



28168
Plug-in Smart
Switch



28166
Plug-in Smart
Dimmer



28172
Plug-in Dual-
Outlet Smart
Switch



14311
Plug-in Outdoor
Smart Switch